



**KWAZULU-NATAL PROVINCE**

TRANSPORT  
REPUBLIC OF SOUTH AFRICA

**DIRECTORATE**

Tel: 035 879 81000

Fax: 035 879 8154

Email: zandi.nene@Kzntransport.gov.za

Website: <http://www.kzntransport.gov.za>

**BRIEFING NOTES FOR THE PROJECTS TABLE BELOW COST CENTRE ULUNDI (EMPANGENI REGION)**

<b>ZNB NUMBER</b>	<b>DESCRIPTION</b>
ZNB00725/00000/00/ULU/INF/21/T	Betterment and Re-gravelling on D2315, km 3.0 – 5.4 within Nongoma Local Municipality

## Welcome and introduction

Queries relating to issues arising from these documents may be addressed to the following:

ALL ENQUIRIES	
Supply Chain Managment	Technical
Ms Zandi Nene Telephone: 035 879 8100 Email.: <a href="mailto:zandi.nene@kzntransport.gov.za">zandi.nene@kzntransport.gov.za</a>	Mr Emmanuel L Mpanza Telephone: 035 897 8100 Email.: <a href="mailto:emmanuel.mpanza@kzntransport.gov.za">emmanuel.mpanza@kzntransport.gov.za</a>

TENDER CLOSING DATE ON WEDNESDAY, 22 September 2021 AT 11H00 AM.

## **OVERVIEW**

### **TENDER SECTION**

PART T1: TENDERING PROCEDURE

PART T2: RETURNABLE DOCUMENTS

### **CONTRACT SECTION**

PART C1: AGREEMENTS AND CONTRACT DATA

PART C2: PRICING DATA

PART C3: SCOPE OF WORKS

PART C4: SITE INFORMATION

## PART T1: TENDERING PROCEDURES

### T1.1: TENDER NOTICE AND INVITATION TO TENDER

The Province of KwaZulu-Natal, Department of Transport, invites tenders from contractors experienced in roadworks as per the below table.

ZNB NUMBER	DESCRIPTION	DURATION	CLOSING DATE	GRADE
ZNB00725/00000/00/ULU/INF/21/T	Betterment and Re-gravelling on D2315, km 3.0 – 5.4 within Nongoma Local Municipality	3 Months	22 September 2021	3CE

Only tenderers that satisfy the eligibility criteria stipulated in clause C.2.1 of the Tender Data are eligible to have their tenders considered.

It is estimated that tenderers must have a CIDB contract grading designated as per table above.

Preferences are offered to tenderers who comply with the requirements stipulated in clause C.3.11.1 of the Tender Data.

There will be No Tender Briefing for this tender but briefing notes will be available from 02 September 2021 on the department of transport website and E-tender portal to aid tenderers in completing the documents.

Tender documents can be downloaded from the Departmental website at [www.kzntransport.gov.za](http://www.kzntransport.gov.za) and e-tender portal ([www.etenders.gov.za](http://www.etenders.gov.za))

#### Queries relating to this tender may be addressed to:

Bidding procedure enquiries	Technical enquiries:
Ms Zandi Nene Telephone: 035 879 8100 Email.: <a href="mailto:zandi.nene@kzntransport.gov.za">zandi.nene@kzntransport.gov.za</a>	Mr Emmanuel L Mpanza Telephone: 035 897 8100 Email.: <a href="mailto:emmanuel.mpanza@kzntransport.gov.za">emmanuel.mpanza@kzntransport.gov.za</a>

The closing time for receipt of tenders is 11:00 on Wednesday 22 September 2021 at Department of Transport, Cost Centre Ulundi.

**DOCUMENTS SHOULD BE DEPOSITED IN THE TENDER BOX SITUATED AT**

<b>Main Entrance: Reception Area: DEPARTMENT OF TRANSPORT COST CENTRE ULUNDI</b>
<b>INKONKONI STREET, UNIT A,ULUNDI</b>
<b>ULUNDI</b>
<b>3838</b>

**Telegraphic, telephonic, telex, facsimile, electronic, e-mail and late tenders will not be accepted.**

## TENDERING AND PROCEDURES T1.2: TENDER DATA

### CONDITIONS OF TENDER

The conditions of tender are the standard conditions of tender contained in Annex C of the Construction Industry Development Board Standard for Uniformity in Engineering Construction Works Contracts, published in Government Gazette No. 42622 dated 08 August 2019

### TENDER DATA

Then standard conditions of tender make several references to the tender data for details that apply specifically to this tender. The tender data shall have precedence in the interpretation of any ambiguity or inconsistency between the tender data and the standard condition of tender.

CLAUSE NUMBER	TENDER DATA
C2.1	<p>The Employer is The KZN Department of Transport: The Employer's address for communication relating to this project is: Ulundi Cost Centre Private Bag x 18 Ulundi 3838</p> <p>Only those tenderers who satisfy the following criteria are eligible to submit tenders.</p> <ul style="list-style-type: none"><li>a) Contractor grading designation equal to or higher than <b>as per table above</b> for CE</li><li>b) Registered on the Central Suppliers Data Base</li></ul>
C2.13	Tender offers shall be submitted as an original hard copy on Ulundi Cost Centre, Inkonkoni street, unit a,Ulundi,
C2.15	The closing time for submission of tender is <b>11:00 on Wednesday 22 September 2021</b>
C2.16	The tender offer validity period is <b>12 weeks</b> from the closing date /time for submission of tenders

C3.4	<p>Tender opening</p> <p>The time and location for opening of the tender submission are:</p> <p>Time: 11h00 Date: Wednesday 22 September 2021</p> <p>Location\Venue: Ulundi Cost Centre, , Inkonkoni street, unit a,Ulundi</p>
C3.13	<p>(e ) The legal requirements for acceptance of tender offer are:</p> <p>(i) The tenderer or any of its principals is not listed on the register of Tender Defaulters in terms of Prevention and Combating of Corrupt Activities Act of 2004 as a person prohibited from doing the business with public sector.</p>
	<p>(ii) The Tenderer has not abused the Employers Supply Chain Management System.</p> <p>(iii) The Tenderer has indicated and declared whether a spouse, child or parent of the Tenderer is in the service of the State.</p> <p>(iv) The Employer is satisfied that the Tenderer or any of his principals have not influenced the tender offer and acceptance.</p>

## PART T2: RETURNABLE DOCUMENTS

- a) Returnable Schedule inn T2.2
- b) C1.1 form of offer and Acceptance, C1.1.1: Offer, on page C3
- c) Contract specific data Provided by the contractor in C1.2.3
- d) Pricing data in C2.2 Bill of Quantities.

## T2.2: Returnable Schedule Notes to tender:

1. **Returnable schedule have been based on The CIDB standard for uniformity in Construction Procurement and incorporates National Treasury requirements within them (SBD forms.** Returnable schedule are separated into the following categories:
  - i) Forms, certificates and schedules for completion by the tenderer for use in the quantitative and qualitative **evaluation of the tender** C1.1 form of offer and acceptance, C1.1.1: Offer on page C3.
  - ii) A list of any other returnable document for completion by the tenderer and which will subsequently be **incorporated into contract**
2. Failure to fully complete the relevant returnable documents shall render such a tender offer to be declared non responsive. SBD forms with a watermark not applicable should be ignored
3. Tenderers shall note that their signatures appended to each returnable form represents a declaration that the vouch or the accuracy and correctness of the information provided, including the information provided by the candidates proposed for the specified key positions.
4. Notwithstanding any check or audit conducted by or on behalf of the employer, the information provided in the returnable documents is accepted in good faith and as justification for entering into a contract with a tenderer. If subsequently any information is found to be incorrect such discovery shall be taken as wilful misrepresentation by the tenderer to induce the contract.

A CERTIFICATE OF ATTENDANCE AT CLARIFICATION MEETING.....	T14
B RECORD OF ADDENDA TO TENDER DOCUMENTS .....	T15
C COMPULSORY ENTERPRISE QUESTIONNAIRE .....	T16
D STANDARD BIDDING DOCUMENTS .....	T17
SBD 1: INVITATION TO BID .....	T17
SBD 4: DECLARATION OF INTEREST .....	T19
SBD 6.1: PREFERENCE POINTS CLAIM FORM IN TERMS OF THE PREFERENTIAL PROCUREMENT REGULATIONS 2017 .....	T25
SBD 8: DECLARATION OF BIDDER'S PAST SUPPLY CHAIN MANAGEMENT PRACTICES.....	T36
SBD 9: CERTIFICATE OF INDEPENDENT BID DETERMINATION .....	T38
E B-BBEE STATUS LEVEL VERIFICATION CERTIFICATE .....	T40
F CERTIFICATE OF AUTHORITY FOR SIGNATORY .....	T41
G CONSTRUCTION EXPERIENCE .....	T42
H KEY PERSONNEL .....	T43
I CONSTRUCTION EQUIPMENT .....	T46
J PROPOSED SUBCONTRACTORS .....	T47
K P ARTICIPATION IN JOB CREATION USING LOCAL LABOUR .....	T48
L HEALTH AND SAFETY DECLARATION .....	T50
M DEVIATIONS AND QUALIFICATIONS .....	T52

NOTE: The Tenderer is required to complete each schedule and form listed above to the best of his ability as the evaluation of tenders and the eventual contract will be based on the information provided by the Tenderer. Failure of a Tenderer to complete the schedules and forms to the satisfaction of the Employer may lead to rejection on the grounds that the tender is non-responsive.



## **PART C1: AGREEMENT AND CONTRACT DATA Part C1: Agreement and contract data C1.1.1 Form of Offer**

- Ensure that **amount in words** corresponds with **amount in figures** on the pricing schedule
- Ensure that the form of offer is signed by **authorised person** and one **witness**.

### C1.1.2 Form of Acceptance

- Ensure that Form of Acceptance is signed by authorised person and one witness.
- Ensure that schedules of deviations is fully completed signed by authorised person and one witness

### C1.3.2 CONTRACT DATA: INFORMATION PROVIDED BY THE CONSULTANT

Clause	Contract Data
5.14.1	The Requirements for achieving Practical Completion are as stated in General Conditions of Contract 2015
SCC 6.2.1	The Security to be provided by the Contractor shall be: Fix Performance Guarantee of 8% of the first one million rand plus 3.5% of the balance of the contract Cum.
6.10.3	The percentage retention on the amounts due to the contract is 10%.
8.6.1.3	The limit of indemnity for liability insurance is R10 000 000.00 (ten million Rand Only) for any single liability claim. Liability insurance shall include spread of fire risk.
10	<b>CLAIMS AND DISPUTES</b>
10.5.2	Disputes shall be referred to ad-hoc adjudication.
10.5.3	The number of adjudication board members to be appointed shall be one.
10.8.1	Unresolved disputed shall be determined by court proceedings.

### PART C2: PRICING DATA C2.2: BILL OF QUANTITIES Refer to schedule A: Roadworks

### PART C3: SCOPE OF WORKS C3 SCOPE OF WORKS

- This section covers matters that relate to the project as a whole. Matters covered by the general and/or Particulars Conditions of Contract are not repeated in this section, except to provide more detailed information.

**C3.1 STANDARD SPECIFICATIONS** The standard specifications on which this contract is based are the ‘**Standard Specifications for Road and Bridge Works for South African Road Authorities (COTO), Draft Standard (DS), October 2020**

## **C3.2 PROJECT SPECIFICATIONS**

### **PART A: GENERAL**

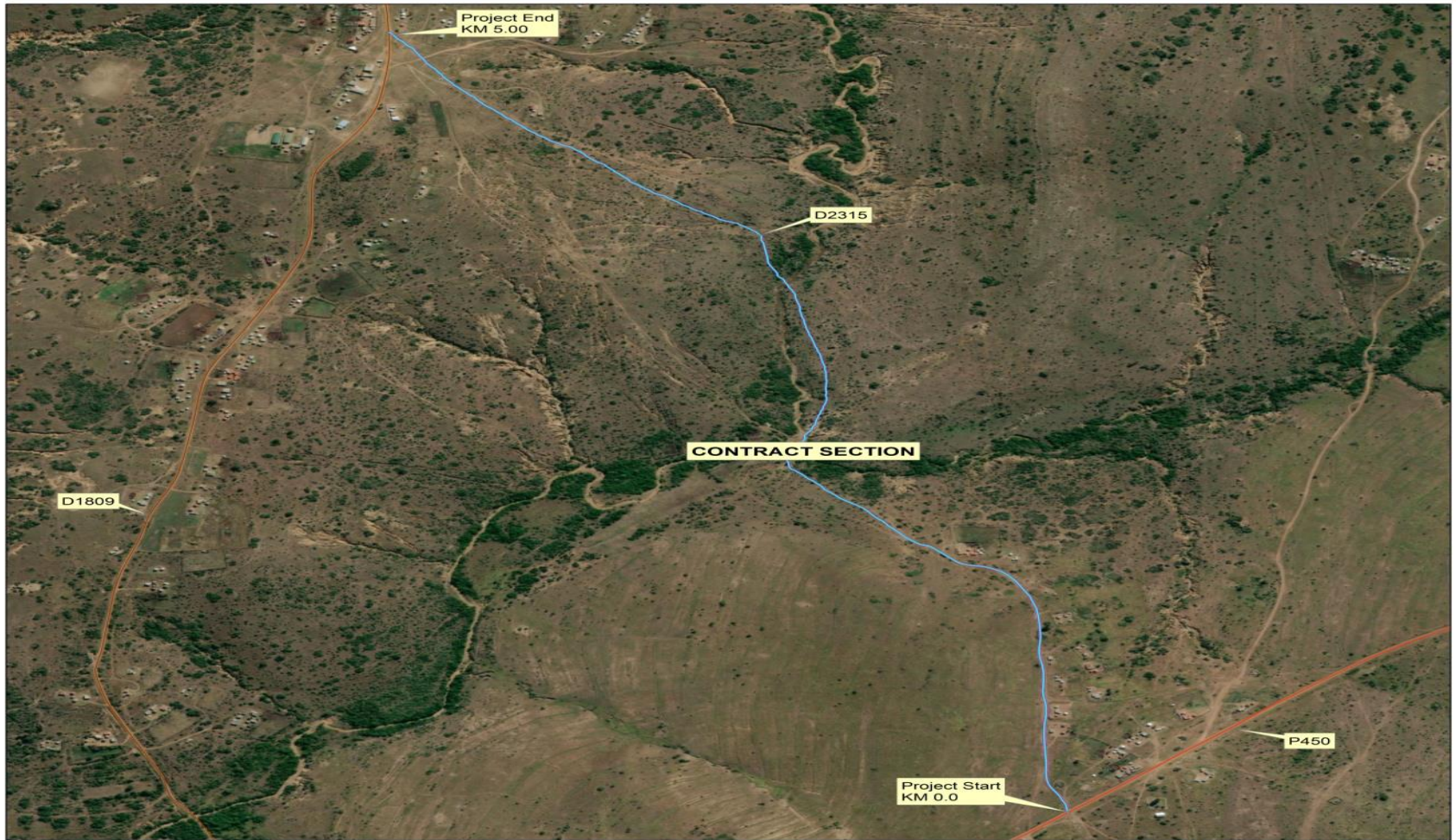
#### **1.1 Employers objective**

##### **1. DESCRIPTION OF WORKS**

- Betterment and Re-gravelling on D2315, km 3.0 – 5.4 within Nongoma Local Municipality.

# 1.2 Location of the work

## BETTERMENT AND REGRAVELING - D2315



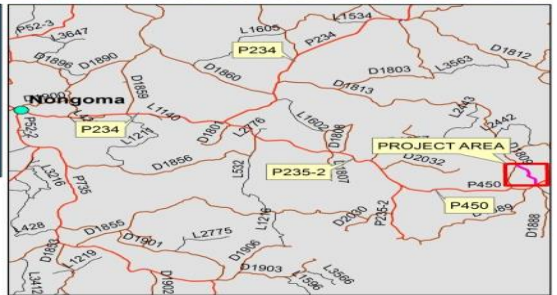
Scale - 1:180,000



**LOCALITY**  
**D2315 - BETTERMENT AND REGRAVELING**  
 (km 0.00 to km 2.40)  
 Start Co Ords: -27.97316°S 31.92959°E  
 End Co-ords: -27.95336°S 31.91870°E

consultant:  
**Anderson Vogt**  
 94 victoria street, dundee, 3000  
 p o box 772, dundee, 3000  
 tel: (034) 212-3142 fax: (034) 212-4437  
 dundee pietermaritzburg durban  
 mtubatuba edenvalle





### **1.3 Overview of the works**

The project comprises the betterment and re-gravelling of 2.4 kilometres of D2315. It will include reshaping and layer works with the associated road prism drainage.

### **1.4 Extent of the works**

The Works to be carried out include the following main activities:

- Establishment on site,
- Accommodation of traffic
- Betterment and re-gravelling
- Drainage Improvements
- Drop Inlet and Headwall construction
- Continuous quality control over material and workmanship , and compliance with the particular specifications with regard to environmental management and occupational health and safety during all activities
- Finishing-off borrow areas and tidying of the road and road reserve

#### **1.5.1 Access to the Site**

Access to the site can be obtained from Department of Transport Area Office Nongoma. Through the duration of the contract, roads shall be shared with other contractors engaged by the KwaZulu Natal Department of Transport on the identified projects whose construction activities may affect access from time to time. The contractor shall therefore require to liaise on an ongoing basis with these other contractors with respect to access related matters throughout the duration of the contract.

#### **1.5.6 Material sources spoil and stockpile areas**

The Borrow pit for D 2315 is located 10 km away from road D2315.

#### **1.5.7 Testing of material**

The Contractor shall carry out at his own cost the required process control testing as specified in terms of the Standard Specifications for Road and Bridge Works for South African Road Authorities (COTO), Draft Standard (DS), October 2020.

### **1.10 Contractors campsite (Project Specification)**

The Contractor shall make his own arrangements for the provision of his campsite and housing for construction personnel but the chosen site shall be subject to the approval of the Employer's Agent, the local authorities and, where applicable, the Project Liaison Committee (PLC) associated with the project.

The standard of the Contractor's camp, offices, accommodation, ablution, and other facilities must comply with the requirements of all local authority, environmental and industrial regulations concerned. In establishing and maintaining his campsite, due cognisance is to be taken of the requirements of clause A1.3.3 of the Standard Specifications for Road and Bridge Works for South African Road Authorities (COTO), Draft Standard (DS), October 2020.

### **1.12 Construction Programme**

The Contractor shall submit a detailed time programme in accordance with clause 5.6.2 of the General Conditions of Contract 2015, clause A1.2.7 of the Standard Specifications for Road and Bridge Works for South African Road Authorities (COTO), Draft Standard (DS), October 2020.

### **5.7 Daily Records**

A site diary is to be compiled jointly by the Construction Manager and the Employer's Agent's Representatives on site and is to be agreed and signed by both parties. The original signed copy is to be retained by the Employer's Agent's Representative.

The Contractor is to keep daily records of people and equipment on site in a format to be agreed by the Employer's Agent's Representative and is to provide copies to the Employer's Agent's Representative when requested.

### **5.8 Payment Certificate**

Details of measurements, proof of payment for items contained in provisional sums and prime cost sums, proof of ownership of Plant and materials on site and documentation pertaining to contract price adjustment and special materials, are required as substantiation of claims for payment.

### **5.11 Submission of reports**

The contractor shall submit monthly reports in accordance with the specifications in Part E: Expanded Public Works Programme and Part F: Small Contractor Development.